



17e Congrès
Médecine
Générale
France



DU 21 MARS
AU 23 MARS
PARIS 2024
palaisdescongrèsdeparis
congres.cmg.fr
f t in y

General practice: the past, the present, the future

Dr Victoria Tzortziou Brown

Vice Chair External Affairs,

Royal College of General Practitioners, UK



17e Congrès
Médecine
Générale
France



MYTHES ET RÉALITÉS
EN MÉDECINE GÉNÉRALE

Organisé par le Collège de la Médecine Générale

DU 21 MARS
AU 23 PARIS 2024
palais des congrès de paris

congres.cmg.fr



Déclaration des liens d'intérêts



History of general practice

16th, 17th and early 18th century: no restrictions on who could practise medicine

Mid-18th century: apothecary apprenticeships and the beginning of medical training –not doctors

Early 19th century: all new entrants to general practice to acquire the Licence of the Society of Apothecaries (LSA).

1920s and 30s: poverty, working people on a low income had insurance but this did not include children or the elderly

1948: National Health Service (NHS). GPs became the 'gatekeepers' to hospital services. No formal GP training. Many GPs were working from their own homes.



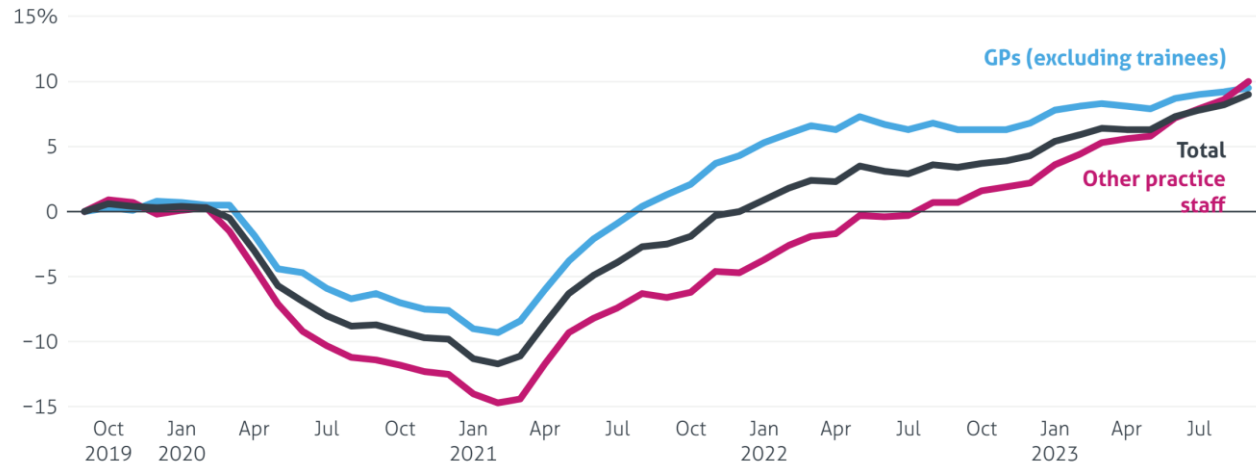
RCGP

- Founded in 1952: To encourage, foster, and maintain the highest possible standards for general practice
- The largest of the Medical Royal Colleges
- Over 54,000 members
- 32 Faculties
- Council
- Cum Scientia Caritas – Compassion [empowered] with Knowledge.



Workload

Change in appointments delivered per FTE in previous 12 months compared to pre-pandemic levels, by staff group IfG



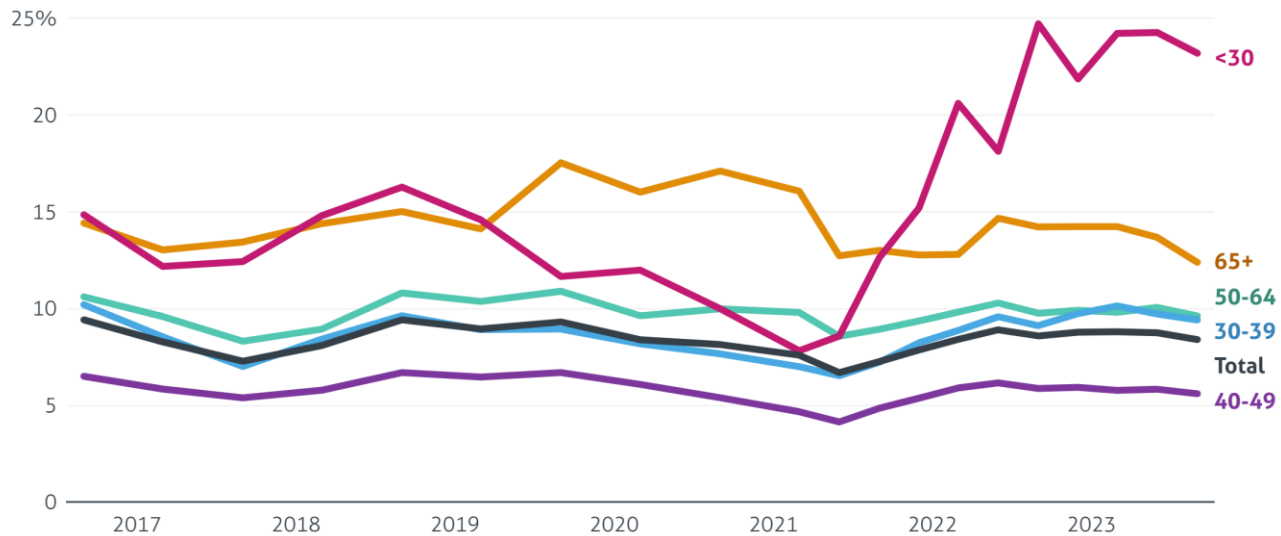
Source: Institute for Government analysis of NHS England, 'Appointments in General Practice, September 2023' ('Table 1'); and NHS Digital, 'General Practice Workforce, England, Bulletin Tables December 2015 – September 2023' (table '1a'), supported by CIPFA. • Notes: 'Pre-pandemic' here refers to the 12 months to September 2019 as this was the last 12 month period for which there was data before Covid. Data was first published in 2018/19. 'Other practice staff' in this chart is the sum of direct patient care and primary care nursing staff in the GP workforce bulletin. • Get the data • Embed • Download image



- General practice: 31.9 million consultations in November 2023
- A&E: 2 million consultations/month
- In 1953, GPs were visiting 12-30 people each day and seeing 15-50 patients in their practices
- Today GP appointments are usually 10-15 minutes long-but significantly more complexity

Workforce

Proportion of GPs (FTE) leaving the NHS, by age band, September 2016 to September 2023



Source: Institute for Government analysis of NHS Digital, 'General Practice Workforce, England, GP Joiners and Leavers 2015 – September 2023', supported by CIPFA. • Notes: The figures relate to fully qualified GPs who left the NHS in the 12 months up to the relevant date. Data was first published in 2016/17. • Get the data • Embed • Download image



- GPs in training formed 27% of the FTE workforce in September 2023, compared to 19% in December 2019 and 15% in 2015.
- In November 2023, there were 6,355 GP practices, 7.0% fewer than in 2019

Health Inequalities

GPs in deprived parts of England receive 7% less funding per need-adjusted patient than GPs in affluent areas.

Practices in areas of high deprivation have on average 300 (14.4%) more patients per fully qualified GP.



Climate change and planetary health

“Climate change is a threat to human wellbeing and planetary health. Any further delay in concerted anticipatory global action on adaptation and mitigation will miss a brief and rapidly closing window of opportunity to secure a liveable and sustainable future for all.”

Intergovernmental Panel on Climate Change

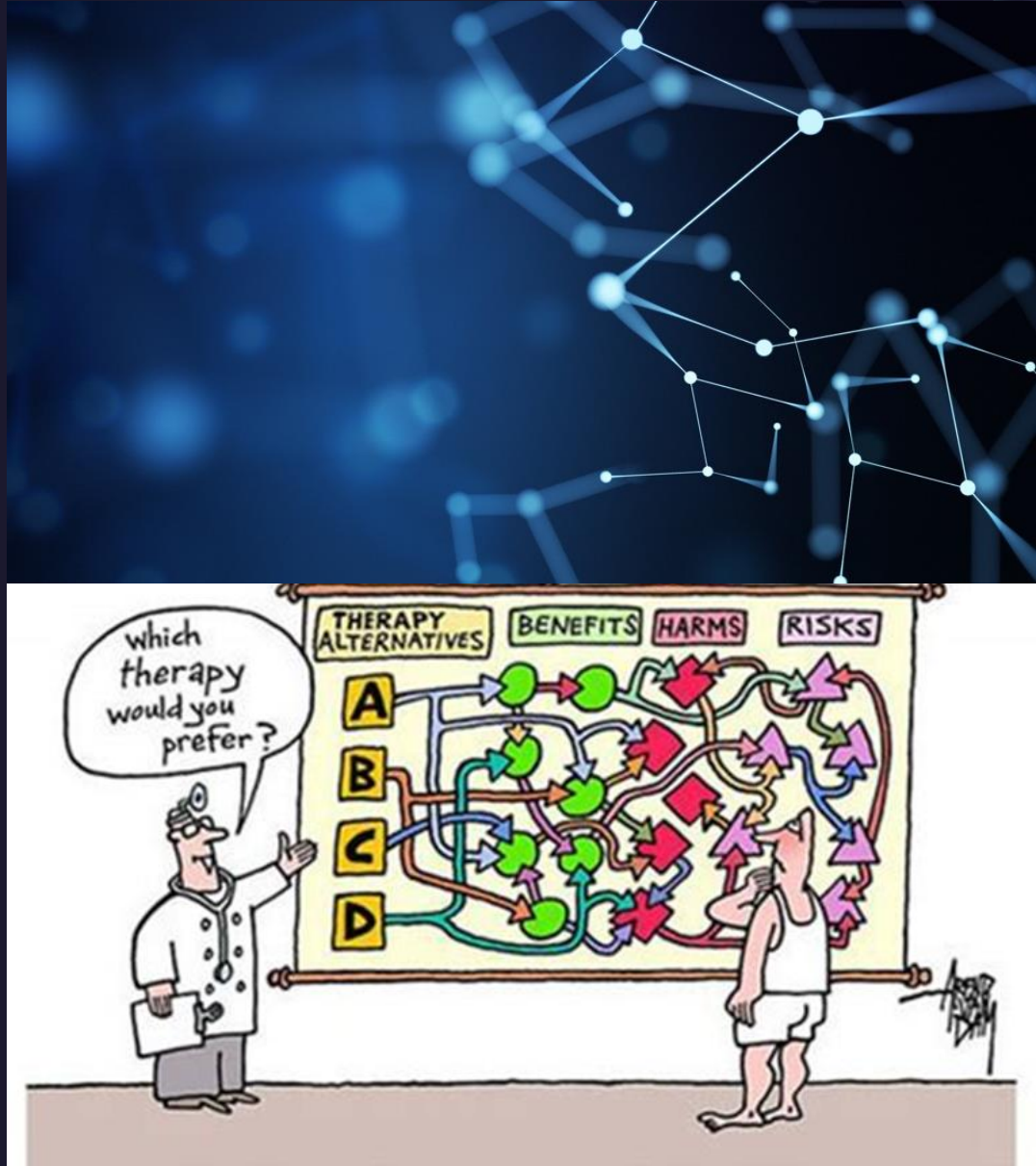


- Primary care makes up 23% of the NHS's emissions.
- Approximately 16% of general practice's emissions come from energy use.

Overdiagnosis and overprescribing

It has been estimated that 60% of care on average is in line with evidence- or consensus-based guidelines, 30% of medical care is of low value or wastes resources, and 10% is harmful.¹

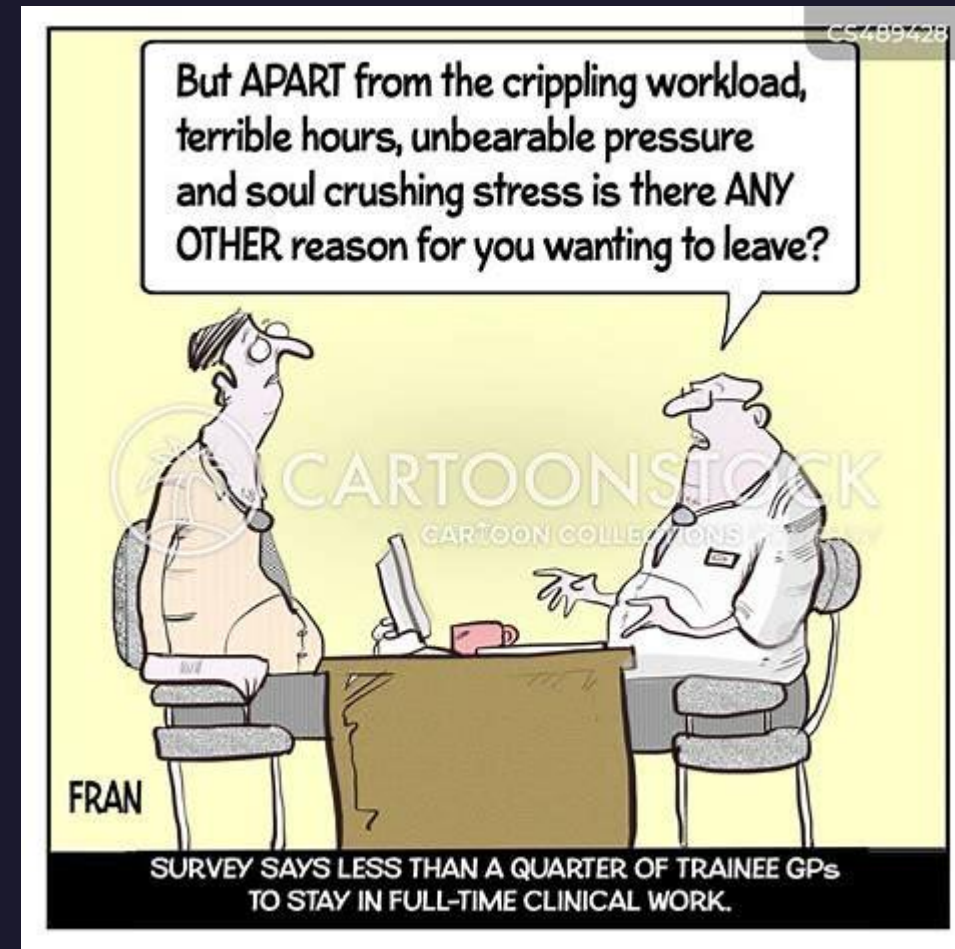
10% of dispensed items are overprescribed and approximately 15% of hospital admissions in over-65s are caused by the adverse effects of medicines.



1. Braithwaite J, Glasziou P, Westbrook J. The three numbers you need to know about healthcare: the 60-30-10 Challenge. BMC Med2020;18:102. <https://bmcmedicine.biomedcentral.com/counter/pdf/10.1186/s12916-020-01563-4.pdf>. doi:10.1186/s12916-020-01563-4 pmid:32362273

Workload

- Manifesto: national alert system to flag unsafe levels of workload
- Manifesto: Resources to reflect any shifts of workload to the community
- Manifesto: Free up GPs to spend time with patients
- Understanding workload and bureaucracy



Definition of a GP



*"A GP is a doctor who is a **consultant in general practice**.*

GPs have **distinct expertise and experience** in providing **whole person** medical care whilst managing the **complexity, uncertainty and risk** associated with the **continuous** care they provide.

GPs work at the heart of their **communities**, striving to provide **comprehensive and equitable** care for everyone, taking into account their health care needs, stage of life and background.

GPs work in, connect with and **lead multidisciplinary teams** that care for people and their families, respecting the context in which they live, aiming to ensure all of their physical and mental health needs are met."

Workforce



- Manifesto: A new nationally funded 'one-stop-shop' retention programme.
- Manifesto: Investment in training capacity in general practice.
- Manifesto: Guarantee permanent residence for international medical graduates to make sure they can work in the NHS

Health inequalities

- Manifesto: Provide more support to patients in deprived communities

Humanity's

greatest advances are not in its discoveries, but in how those discoveries are applied to reduce inequality.

~Bill Gates

Tower Hamlets: Calpol most shoplifted item in borough

© 20 April



Planetary health

- Manifesto: Give every patient access to a modern, fit-for-purpose general practice building.
- Planetary health events and faculty activities supported by our faculty planetary health leads
- E-learning resources
- RCGP as an organization: actions to reduce carbon emissions



Opportunities

- Data
- Research
- Innovation



Challenges

Over half a million patients forced to swap GP surgeries after closures last year, investigation finds

"Practice closures, because pressures mean they are no longer safe or sustainable to keep running, are incredibly serious – and heartbreaking for everyone involved," GP leaders say

Alex Matthews King Health Correspondent | 3 days ago



Daily Mail definitive diet

FREE INSIDE Definitive Diet pullout

The three golden rules losing weight

BROKEN A&E IS YOUR FAULT!

Hunt says 1 in 3 of us shouldn't be in casualty at all
++ Ops are axed ++ 999 crews told to keep elderly in care homes ++ And 4-hour wait targets could go

Meryl's Trump rant... but Brit Claire's queen of the Globes

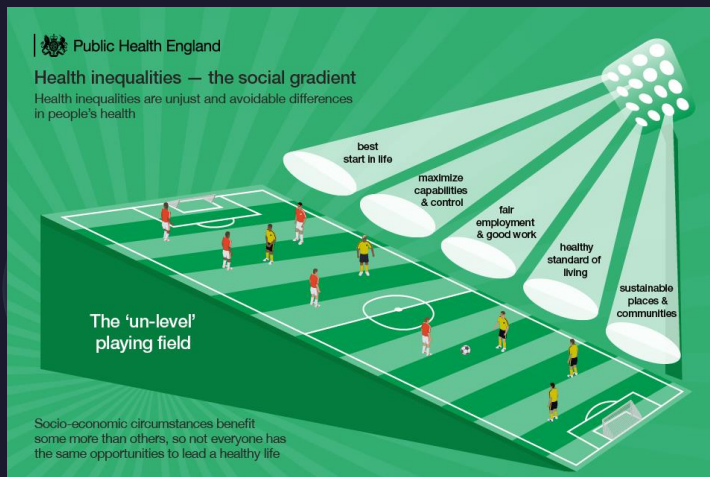
Daily Mail Daily Mail COMMENT

For sanity's sake don't let a class-war zealot and the SNP destroy our economy – and our very nation

How YOU can vote tactically to keep out Red Ed

THE DOCTOR WILL SEE YOU IN A MONTH!

GPs' waiting times warning to patients



Panorama Health Service, BBC 1967

